

2-BEDROOM

TYPE A1a
53 sqm | 570 sqft

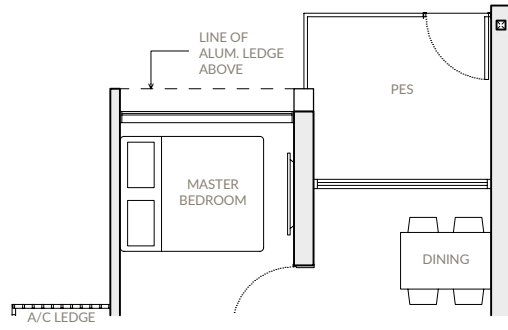
TYPE A1a-P

Block 21

- #03-21
- #03-22 (Mirrored)
- #03-29 (Mirrored)

Block 23

- #03-30
- #03-37 (Mirrored)



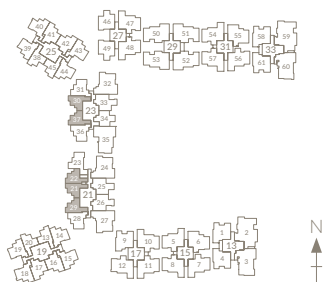
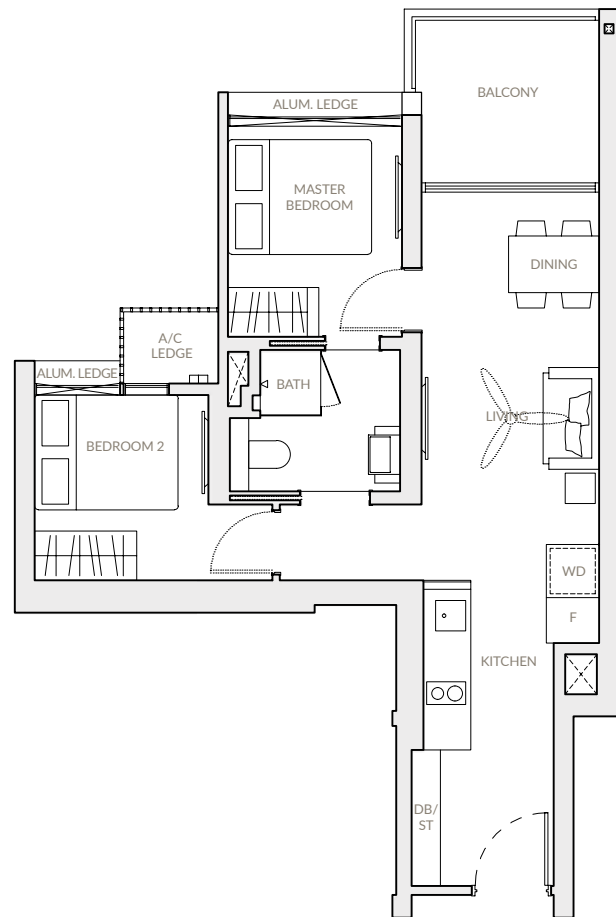
Type A1a

Block 21

- #04-21 to #13-21
- #04-22 to #13-22 (Mirrored)
- #04-29 to #13-29 (Mirrored)

Block 23

- #04-30 to #13-30
- #04-37 to #13-37 (Mirrored)



Notes: Area includes A/C ledge, balconies, PES and void where applicable. Areas are estimates only and are subject to final survey. Plans are not to scale and subject to changes as may be required by the relevant authorities. The balconies and PES shall not be enclosed unless with approved screen. For an illustration of the approved balcony screen, please refer to the diagram annexed hereto as "Annexure".

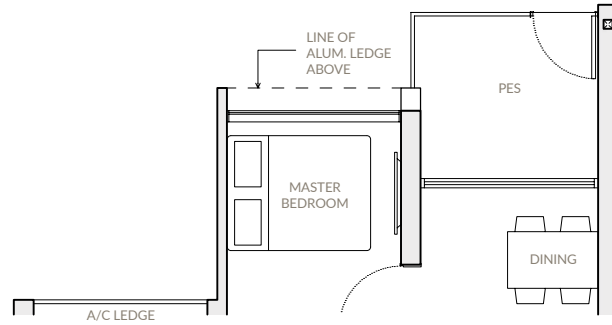
2-BEDROOM

TYPE A1b
55 sqm | 592 sqft

TYPE A1b-P

Block 19
#03-13
#03-20 (Mirrored)

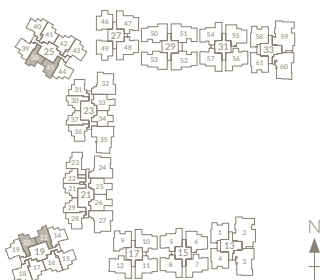
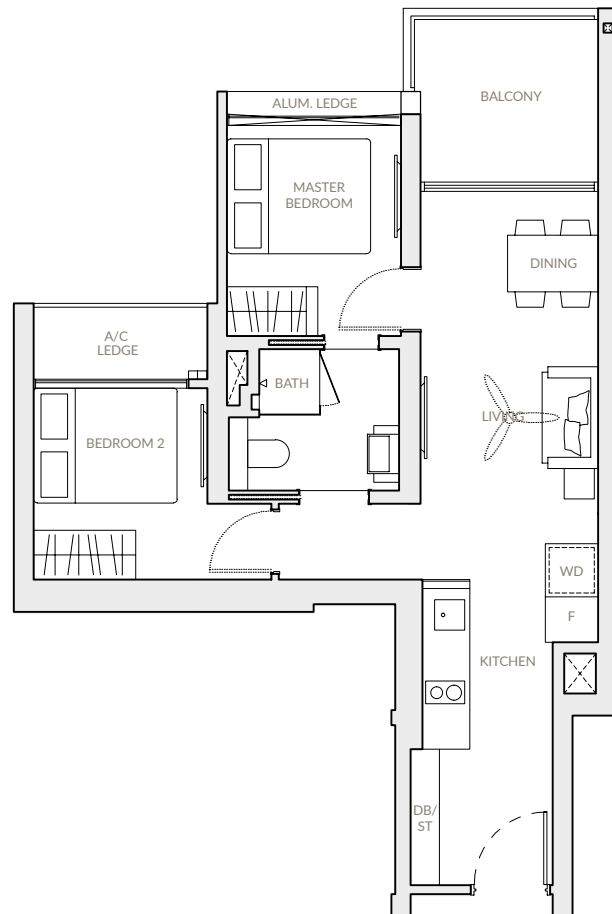
Block 25
#03-38
#03-45 (Mirrored)



TYPE A1b

Block 19
#04-13 to #13-13
#04-20 to #13-20 (Mirrored)

Block 25
#04-38 to #13-38
#04-45 to #13-45 (Mirrored)



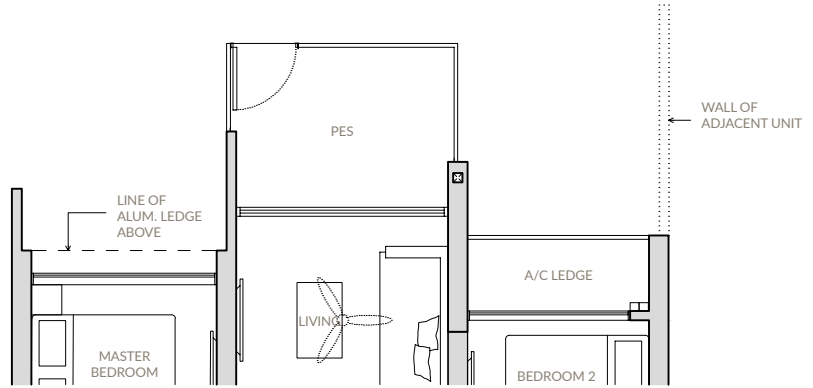
Notes: Area includes A/C ledge, balconies, PES and void where applicable. Areas are estimates only and are subject to final survey. Plans are not to scale and subject to changes as may be required by the relevant authorities. The balconies and PES shall not be enclosed unless with approved screen. For an illustration of the approved balcony screen, please refer to the diagram annexed hereto as "Annexure".

2-BEDROOM DELUXE

TYPE B1
60 sqm | 646 sqft

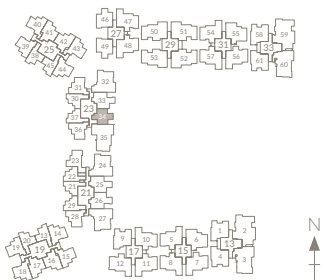
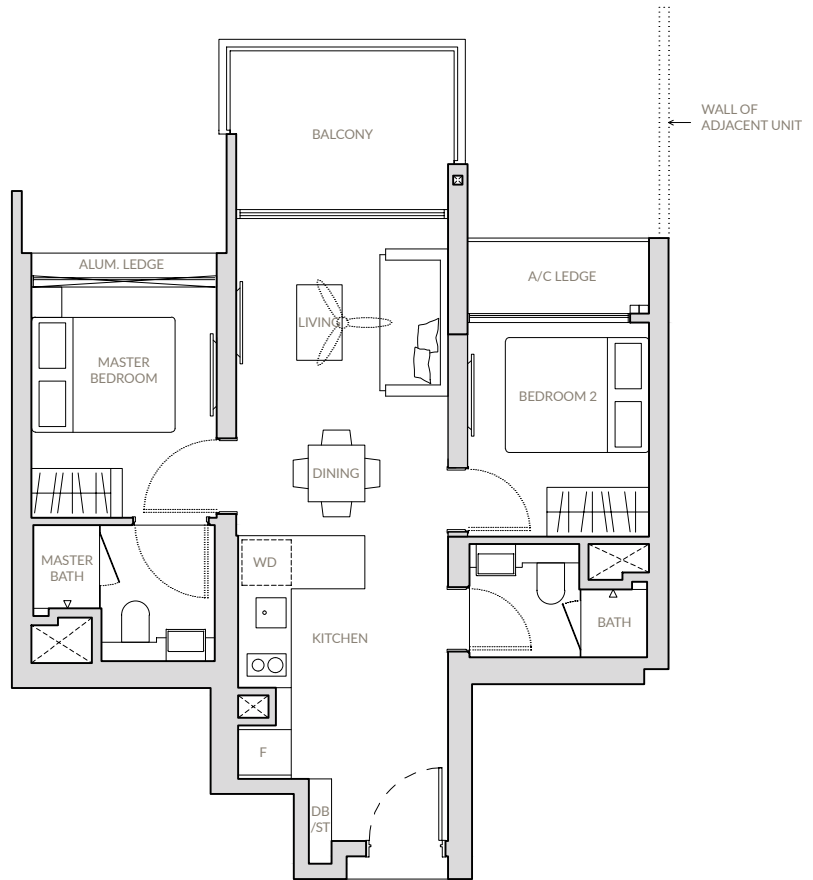
TYPE B1-P

Block 23
#03-34



TYPE B1

Block 23
#04-34 to #13-34



Notes: Area includes A/C ledge, balconies, PES and void where applicable. Areas are estimates only and are subject to final survey. Plans are not to scale and subject to changes as may be required by the relevant authorities. The balconies and PES shall not be enclosed unless with approved screen. For an illustration of the approved balcony screen, please refer to the diagram annexed hereto as "Annexure".

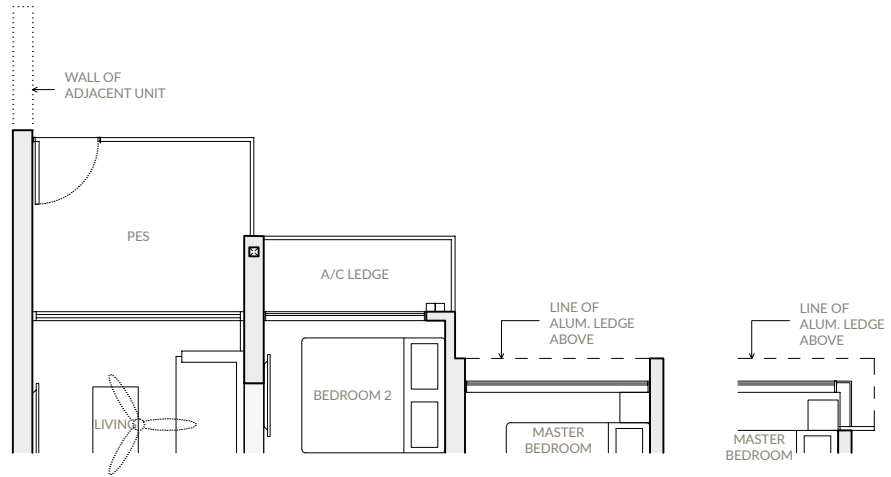
2-BEDROOM DELUXE

TYPE B2a
62 sqm | 667 sqft

TYPE B2a-P

Block 19
#03-14

Block 25
#03-44 (Mirrored)



TYPE B2a*-P

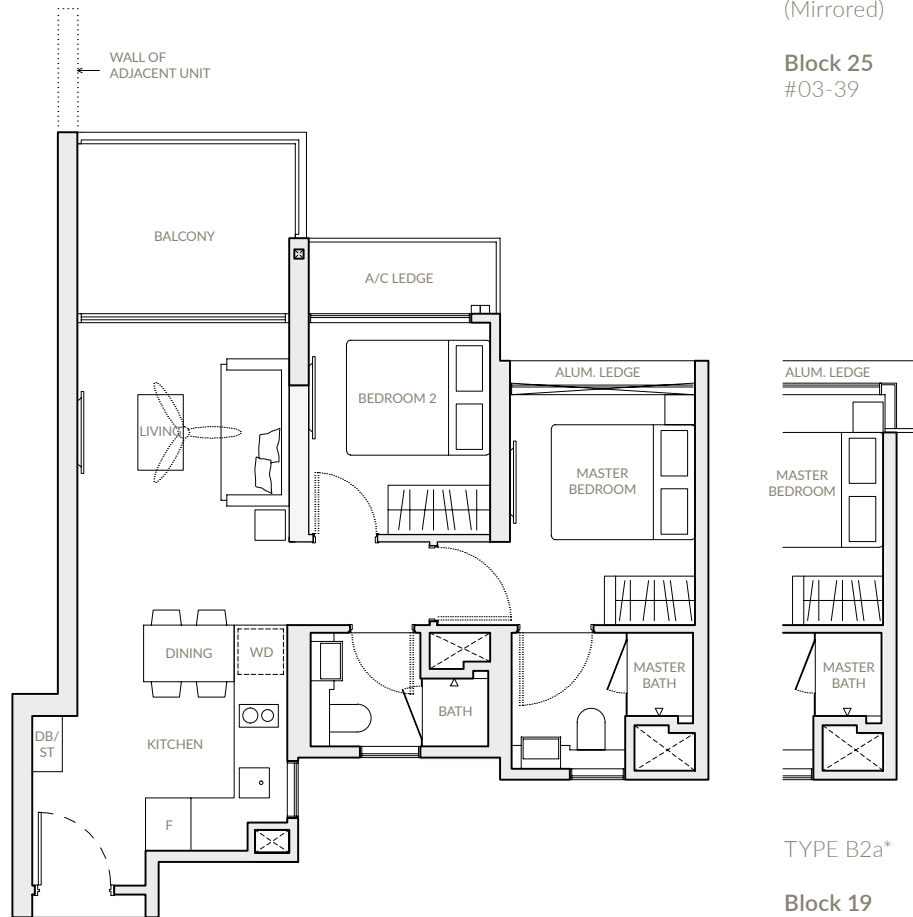
Block 19
#03-19
(Mirrored)

Block 25
#03-39

TYPE B2a

Block 19
#04-14 to #13-14

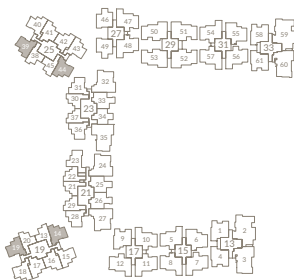
Block 25
#04-44 to #13-44 (Mirrored)



TYPE B2a*

Block 19
#04-19 to #13-19
(Mirrored)

Block 25
#04-39 to #13-39



Notes: Area includes A/C ledge, balconies, PES and void where applicable. Areas are estimates only and are subject to final survey. Plans are not to scale and subject to changes as may be required by the relevant authorities. The balconies and PES shall not be enclosed unless with approved screen. For an illustration of the approved balcony screen, please refer to the diagram annexed hereto as "Annexure".

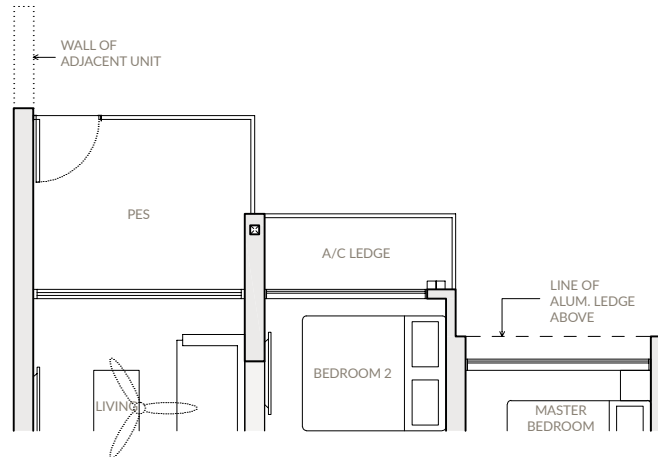
2-BEDROOM DELUXE

TYPE B2b
62 sqm | 667 sqft

TYPE B2b-P

Block 21
#03-28 (Mirrored)

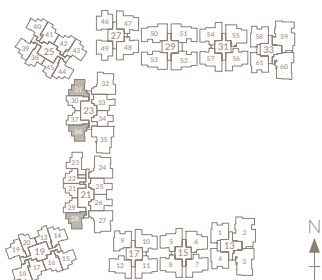
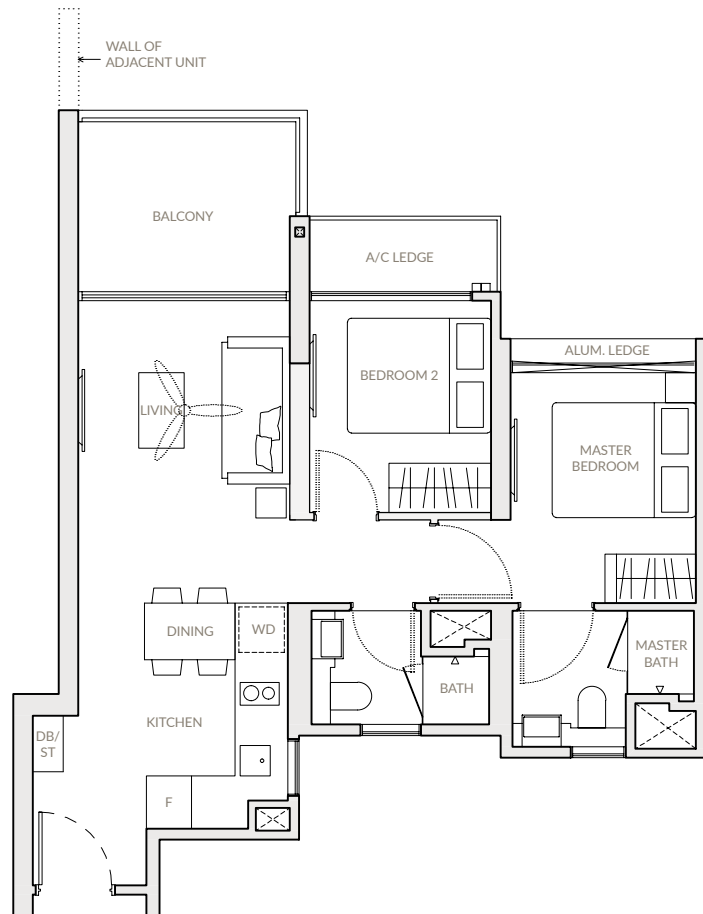
Block 23
#03-31
#03-36 (Mirrored)



TYPE B2b

Block 21
#04-28 to #13-28 (Mirrored)

Block 23
#04-31 to #13-31
#04-36 to #13-36 (Mirrored)



Notes: Area includes A/C ledge, balconies, PES and void where applicable. Areas are estimates only and are subject to final survey. Plans are not to scale and subject to changes as may be required by the relevant authorities. The balconies and PES shall not be enclosed unless with approved screen. For an illustration of the approved balcony screen, please refer to the diagram annexed hereto as "Annexure".

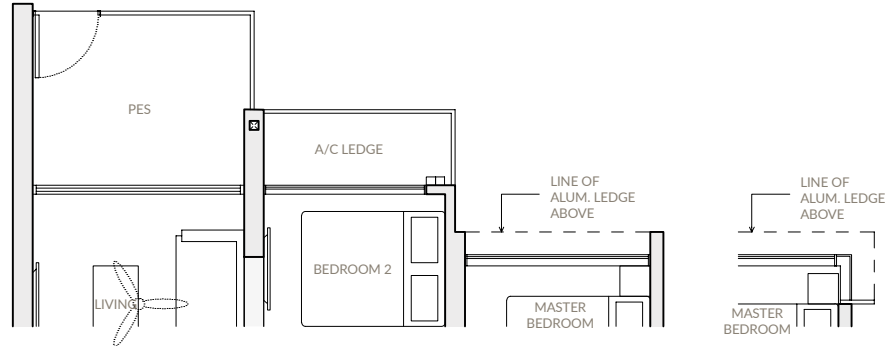
2-BEDROOM DELUXE

TYPE B2c
64 sqm | 689 sqft

TYPE B2c-P

Block 19
#03-15 (Mirrored)

Block 25
#03-43



TYPE B2c*-P

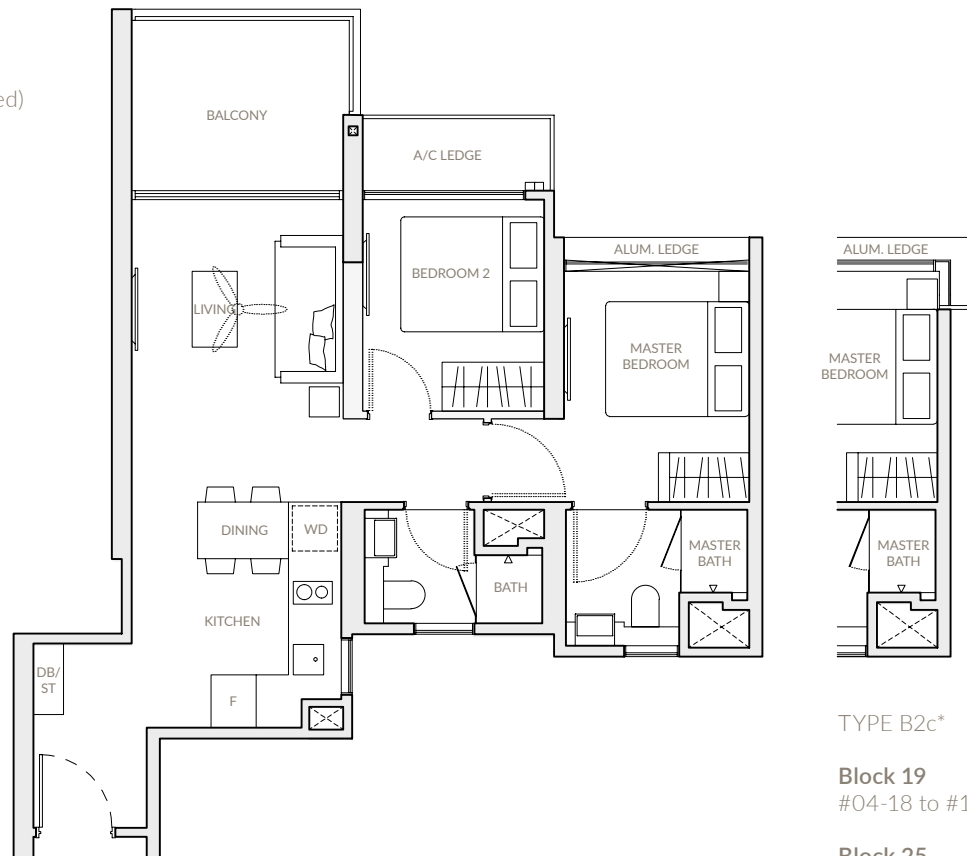
Block 19
#03-18

Block 25
#03-40 (Mirrored)

TYPE B2c

Block 19
#04-15 to #13-15 (Mirrored)

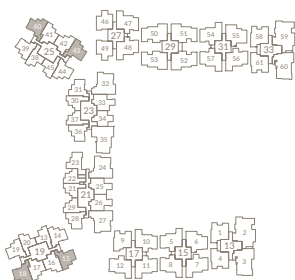
Block 25
#04-43 to #13-43



TYPE B2c*

Block 19
#04-18 to #13-18

Block 25
#04-40 to #13-40
(Mirrored)



Notes: Area includes A/C ledge, balconies, PES and void where applicable. Areas are estimates only and are subject to final survey. Plans are not to scale and subject to changes as may be required by the relevant authorities. The balconies and PES shall not be enclosed unless with approved screen. For an illustration of the approved balcony screen, please refer to the diagram annexed hereto as "Annexure".

2-BEDROOM DELUXE

TYPE B3

65 sqm | 700 sqft

TYPE B3-P

Block 19

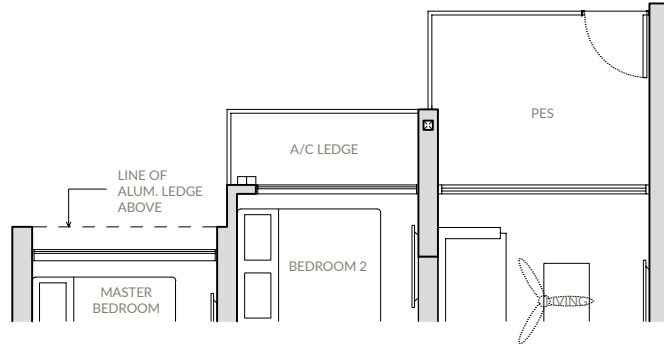
#03-16 (Mirrored)

#03-17

Block 25

#03-41 (Mirrored)

#03-42



TYPE B3

Block 19

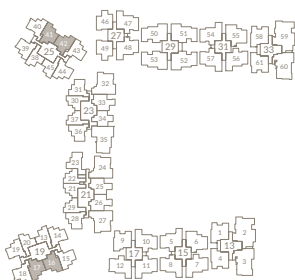
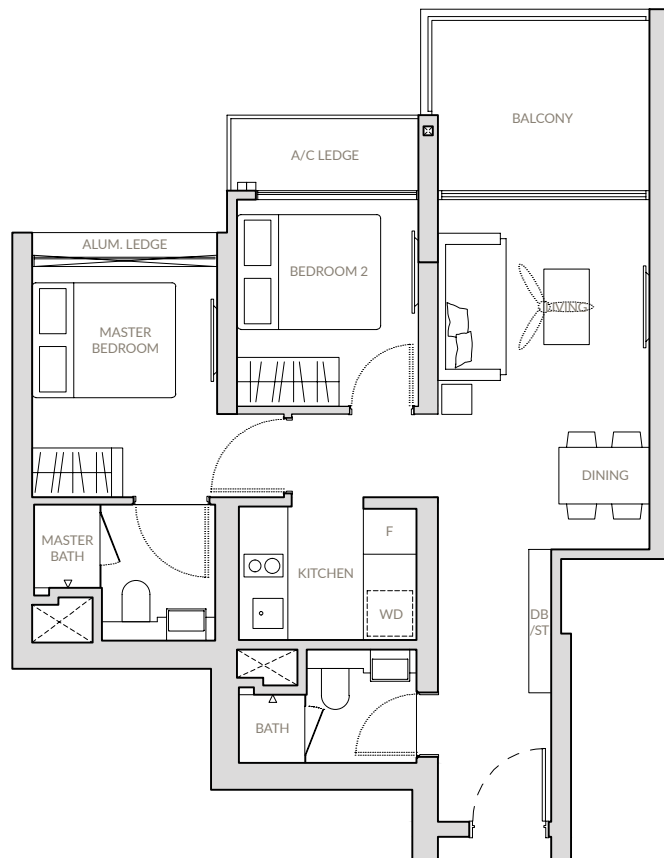
#04-16 to #13-16 (Mirrored)

#04-17 to #13-17

Block 25

#04-41 to #13-41 (Mirrored)

#04-42 to #13-42



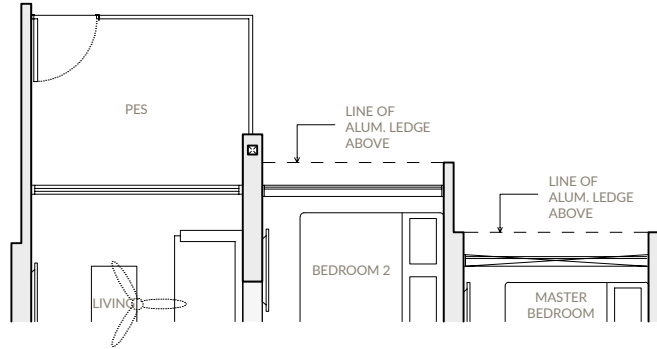
Notes: Area includes A/C ledge, balconies, PES and void where applicable. Areas are estimates only and are subject to final survey. Plans are not to scale and subject to changes as may be required by the relevant authorities. The balconies and PES shall not be enclosed unless with approved screen. For an illustration of the approved balcony screen, please refer to the diagram annexed hereto as "Annexure".

2-BEDROOM DELUXE

TYPE B4
65 sqm | 700 sqft

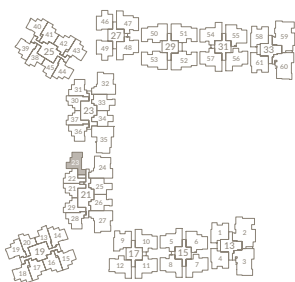
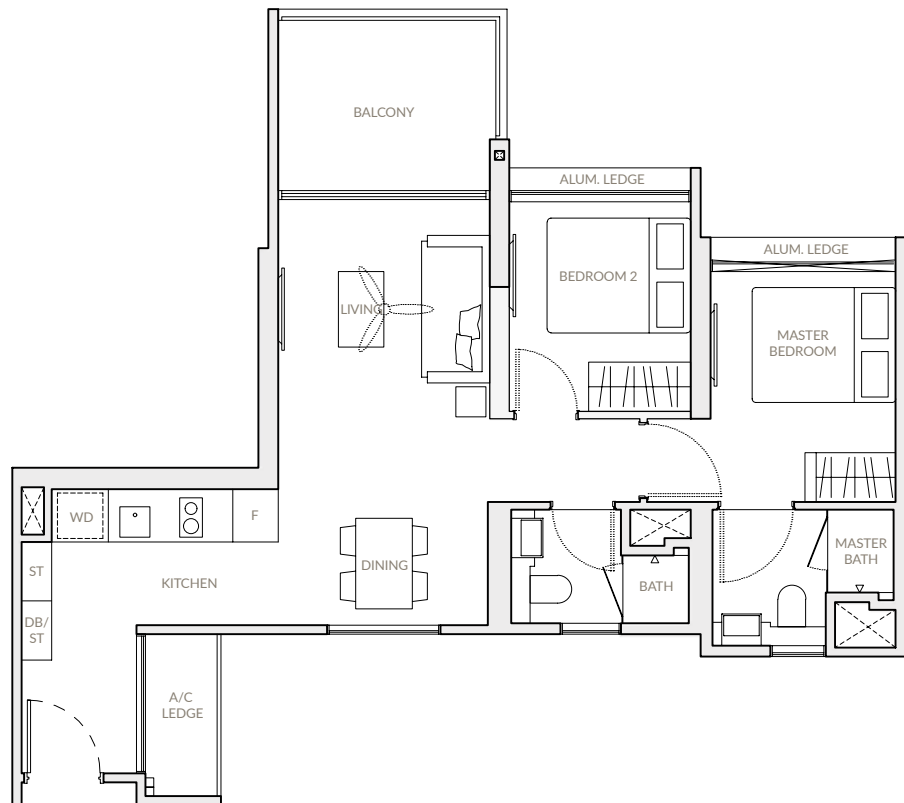
TYPE B4-P

Block 21
#03-23



TYPE B4

Block 21
#04-23 to #13-23



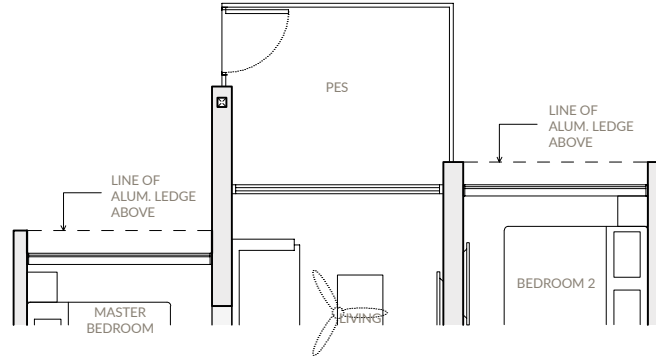
Notes: Area includes A/C ledge, balconies, PES and void where applicable. Areas are estimates only and are subject to final survey. Plans are not to scale and subject to changes as may be required by the relevant authorities. The balconies and PES shall not be enclosed unless with approved screen. For an illustration of the approved balcony screen, please refer to the diagram annexed hereto as "Annexure".

2-BEDROOM FLEXI

TYPE C1
67 sqm | 721 sqft

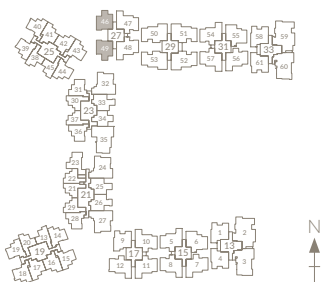
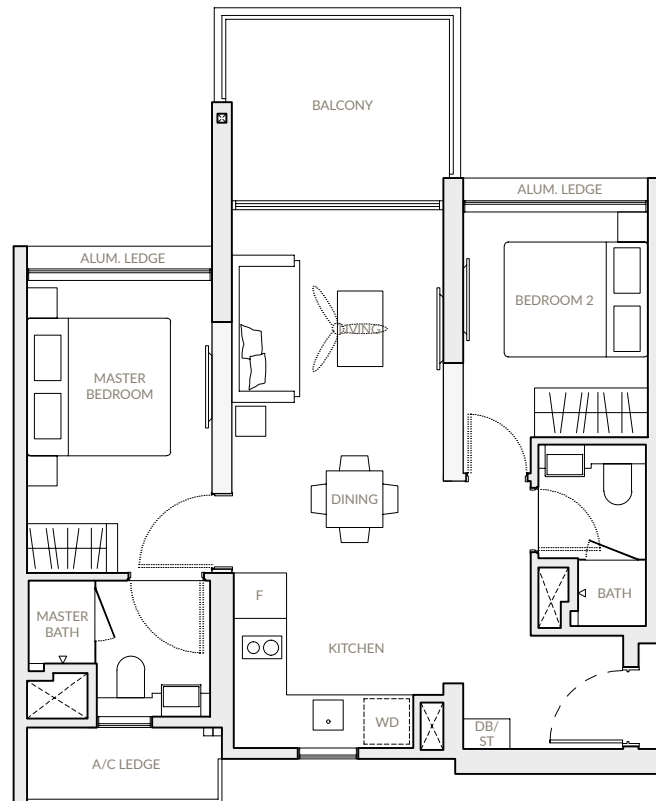
TYPE C1-P

Block 27
#03-46
#03-49 (Mirrored)



TYPE C1

Block 27
#05-46 to #13-46
#05-49 to #13-49 (Mirrored)



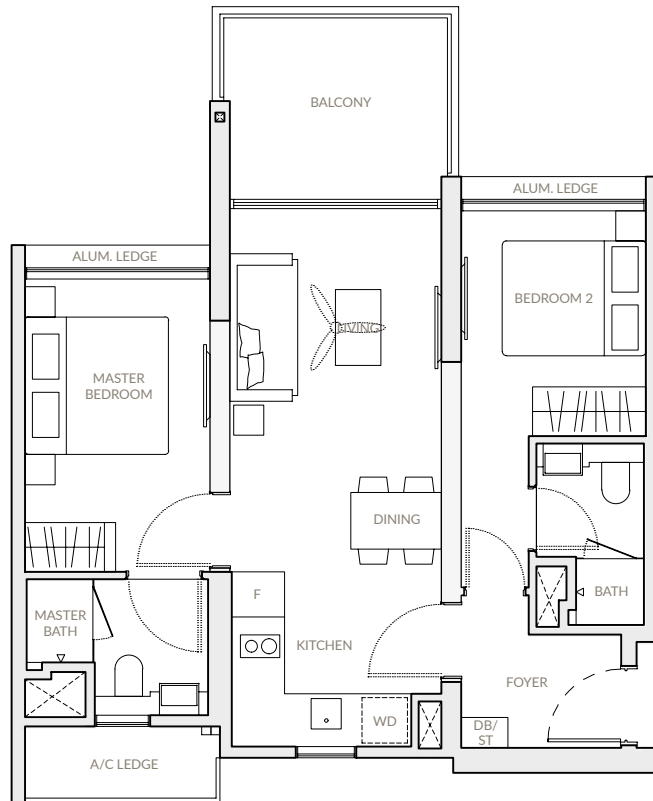
Notes: Area includes A/C ledge, balconies, PES and void where applicable. Areas are estimates only and are subject to final survey. Plans are not to scale and subject to changes as may be required by the relevant authorities. The balconies and PES shall not be enclosed unless with approved screen. For an illustration of the approved balcony screen, please refer to the diagram annexed hereto as "Annexure".

2-BEDROOM FLEXI (Variant Layout)

TYPE C1-V
67 sqm | 721 sqft

TYPE C1-V

Block 27
#04-46
#04-49 (Mirrored)



Notes: Area includes A/C ledge, balconies, PES and void where applicable. Areas are estimates only and are subject to final survey. Plans are not to scale and subject to changes as may be required by the relevant authorities. The balconies and PES shall not be enclosed unless with approved screen. For an illustration of the approved balcony screen, please refer to the diagram annexed hereto as "Annexure".

2-BEDROOM FLEXI

TYPE C2

69 sqm | 743 sqft

TYPE C2-P

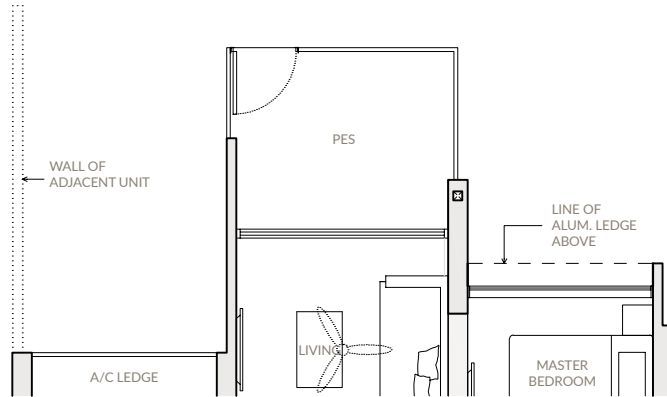
Block 21

#03-25

#03-26 (Mirrored)

Block 23

#03-33



TYPE C2

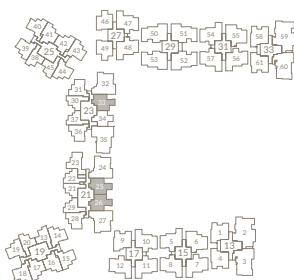
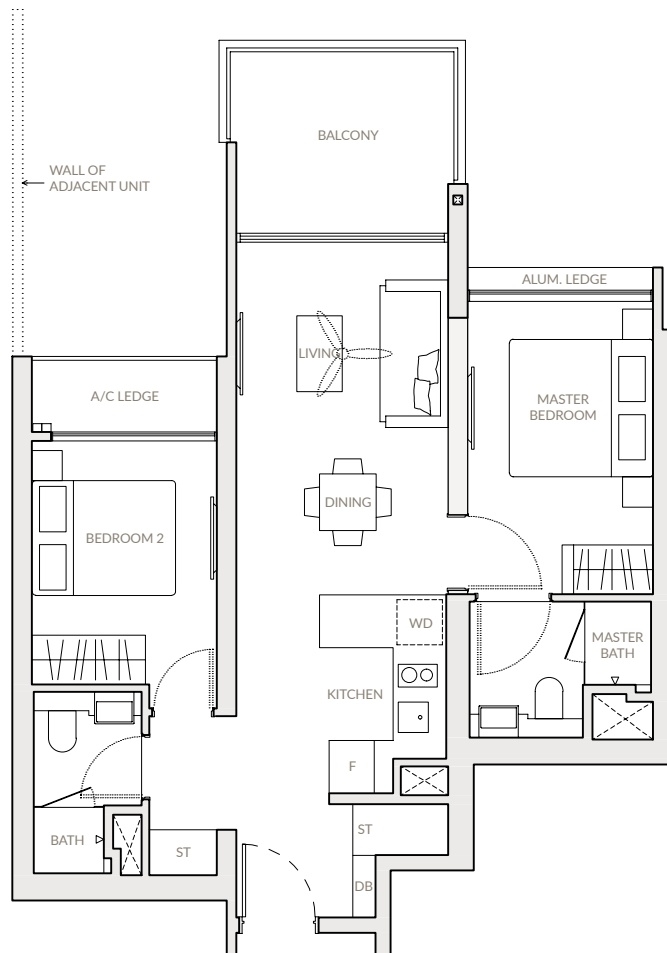
Block 21

#05-25 to #13-25

#05-26 to #13-26 (Mirrored)

Block 23

#05-33 to #13-33



Notes: Area includes A/C ledge, balconies, PES and void where applicable. Areas are estimates only and are subject to final survey. Plans are not to scale and subject to changes as may be required by the relevant authorities. The balconies and PES shall not be enclosed unless with approved screen. For an illustration of the approved balcony screen, please refer to the diagram annexed hereto as "Annexure".

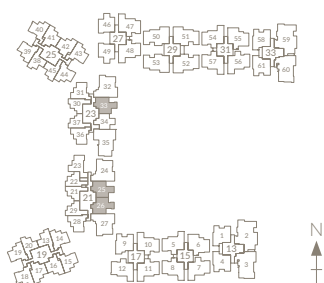
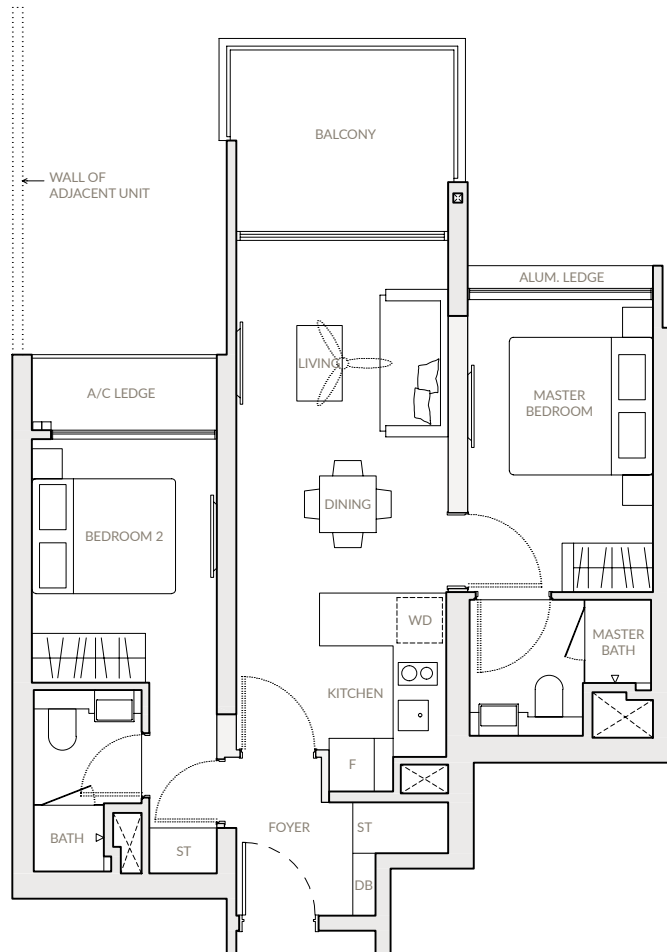
**2-BEDROOM FLEXI
(Variant Layout)**

TYPE C2-V
69 sqm | 743 sqft

TYPE C2-V

Block 21
#04-25
#04-26 (Mirrored)

Block 23
#04-33



Notes: Area includes A/C ledge, balconies, PES and void where applicable. Areas are estimates only and are subject to final survey. Plans are not to scale and subject to changes as may be required by the relevant authorities. The balconies and PES shall not be enclosed unless with approved screen. For an illustration of the approved balcony screen, please refer to the diagram annexed hereto as "Annexure".

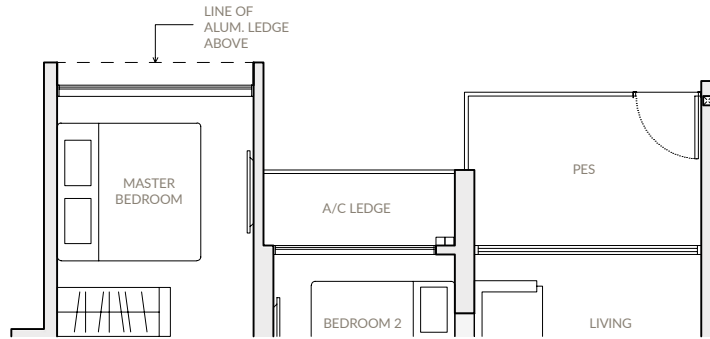
3-BEDROOM

TYPE D1
79 sqm | 850 sqft

TYPE D1-P

Block 13
#03-01
#03-04 (Mirrored)

Block 33
#03-58
#03-61 (Mirrored)

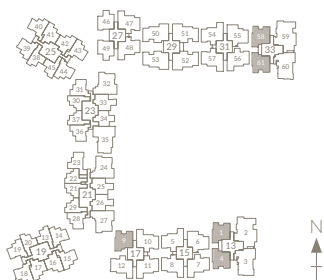
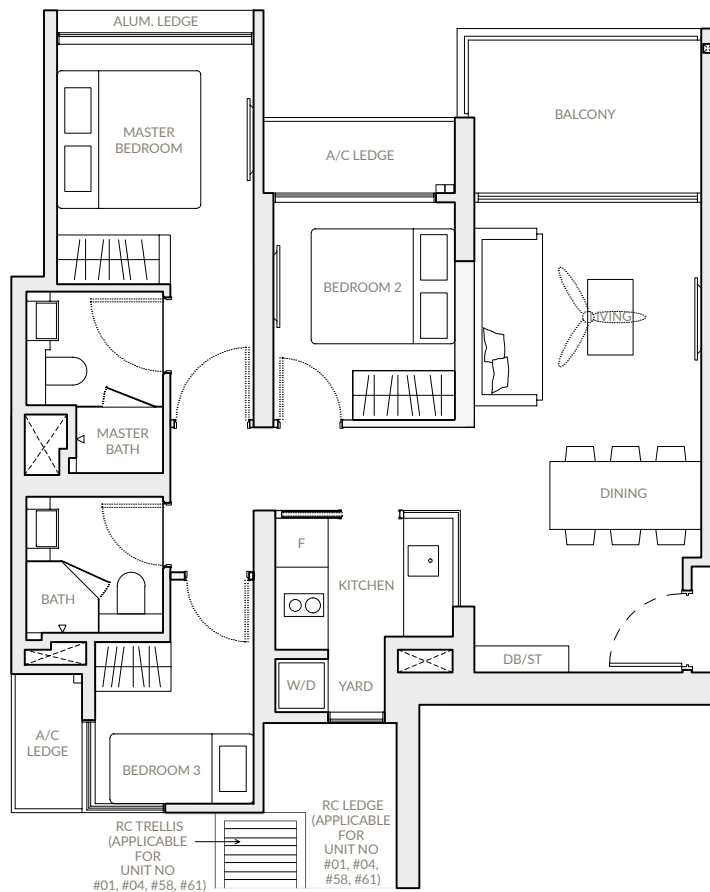


TYPE D1

Block 13
#04-01 to #13-01
#04-04 to #13-04 (Mirrored)

Block 27
#05-09 to #13-09

Block 33
#04-58 to #13-58
#04-61 to #13-61 (Mirrored)



Notes: Area includes A/C ledge, balconies, PES and void where applicable. Areas are estimates only and are subject to final survey. Plans are not to scale and subject to changes as may be required by the relevant authorities. The balconies and PES shall not be enclosed unless with approved screen. For an illustration of the approved balcony screen, please refer to the diagram annexed hereto as "Annexure".

3-BEDROOM

TYPE D2

89 sqm | 958 sqft

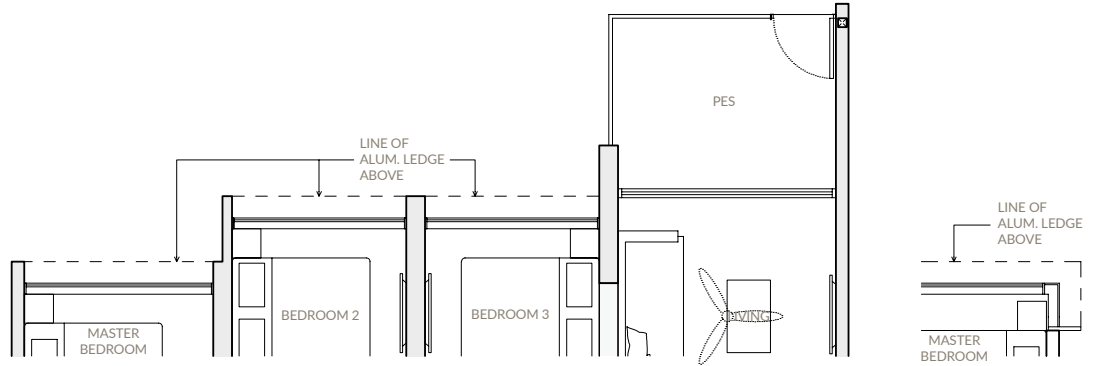
TYPE D2-P

- Block 15**
#03-05
#03-07
#03-08 (Mirrored)

- Block 17**
#03-11

- Block 27**
#03-47 (Mirrored)
#03-48

- Block 31**
#03-54
#03-56
#03-57 (Mirrored)



TYPE D2*-P

- Block 17**
#03-12
(Mirrored)

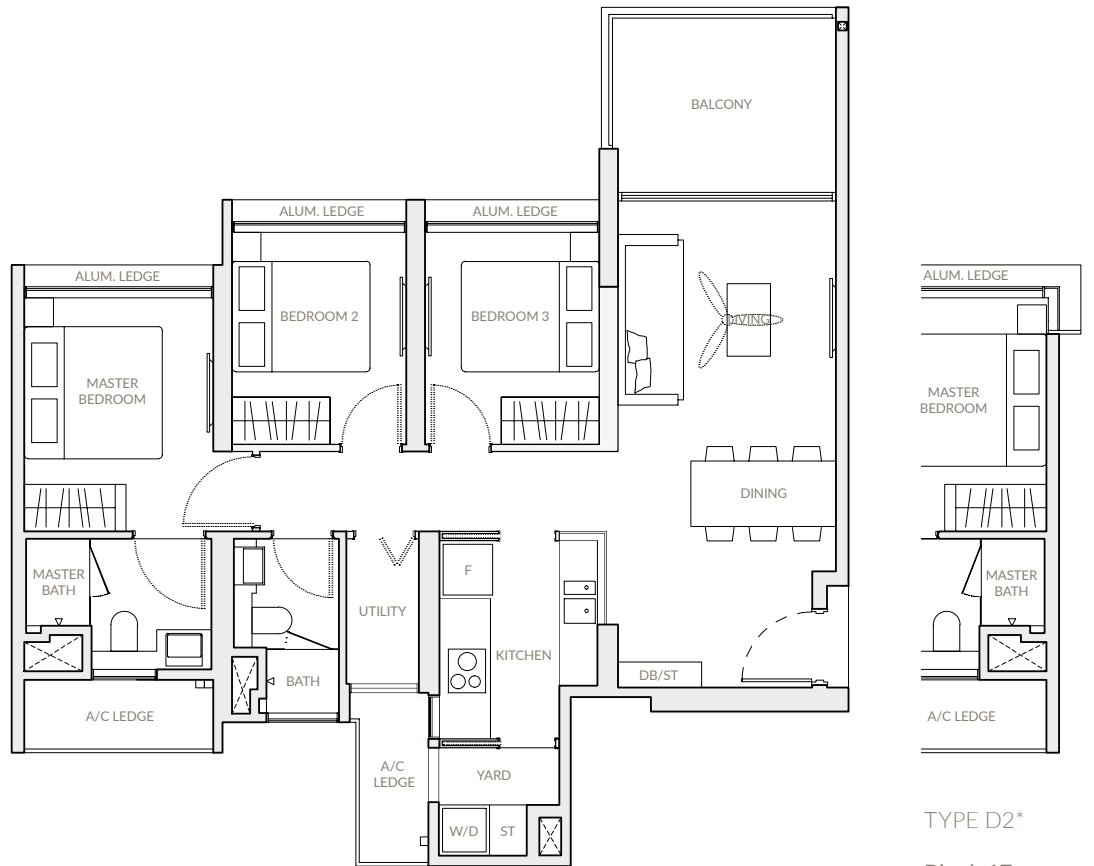
TYPE D2

- Block 15**
#04-05 to #13-05
#04-07 to #13-07
#04-08 to #13-08
(Mirrored)

- Block 17**
#05-10 to #13-10
(Mirrored)
#04-11 to #13-11

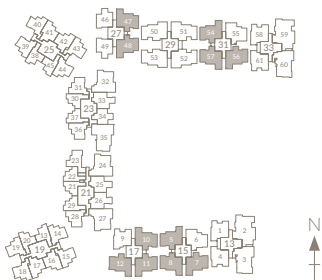
- Block 27**
#04-47 to #13-47
(Mirrored)
#04-48 to #13-48

- Block 31**
#04-54 to #13-54
#04-56 to #13-56
#04-57 to #13-57
(Mirrored)



TYPE D2*

- Block 17**
#04-12 to
#13-12
(Mirrored)



Notes: Area includes A/C ledge, balconies, PES and void where applicable. Areas are estimates only and are subject to final survey. Plans are not to scale and subject to changes as may be required by the relevant authorities. The balconies and PES shall not be enclosed unless with approved screen. For an illustration of the approved balcony screen, please refer to the diagram annexed hereto as "Annexure".

3-BEDROOM

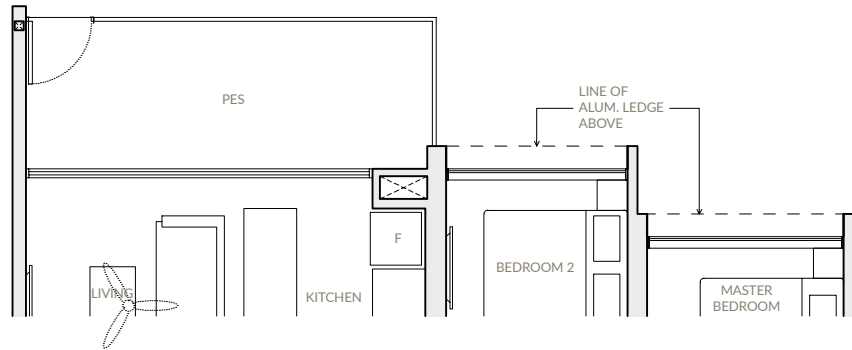
TYPE D3

89 sqm | 958 sqft

TYPE D3-P

Block 15
#03-06

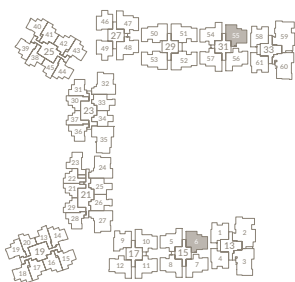
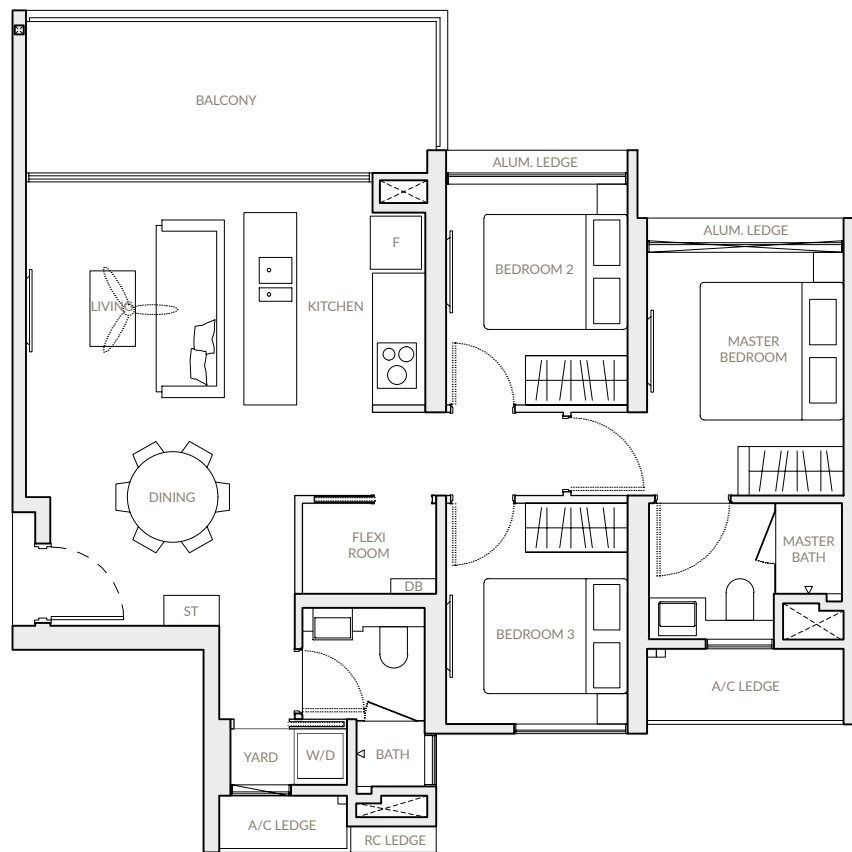
Block 31
#03-55



TYPE D3

Block 15
#05-06 to #13-06

Block 31
#05-55 to #13-55



Notes: Area includes A/C ledge, balconies, PES and void where applicable. Areas are estimates only and are subject to final survey. Plans are not to scale and subject to changes as may be required by the relevant authorities. The balconies and PES shall not be enclosed unless with approved screen. For an illustration of the approved balcony screen, please refer to the diagram annexed hereto as "Annexure".

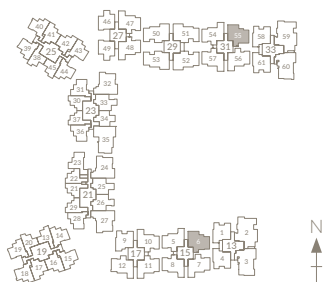
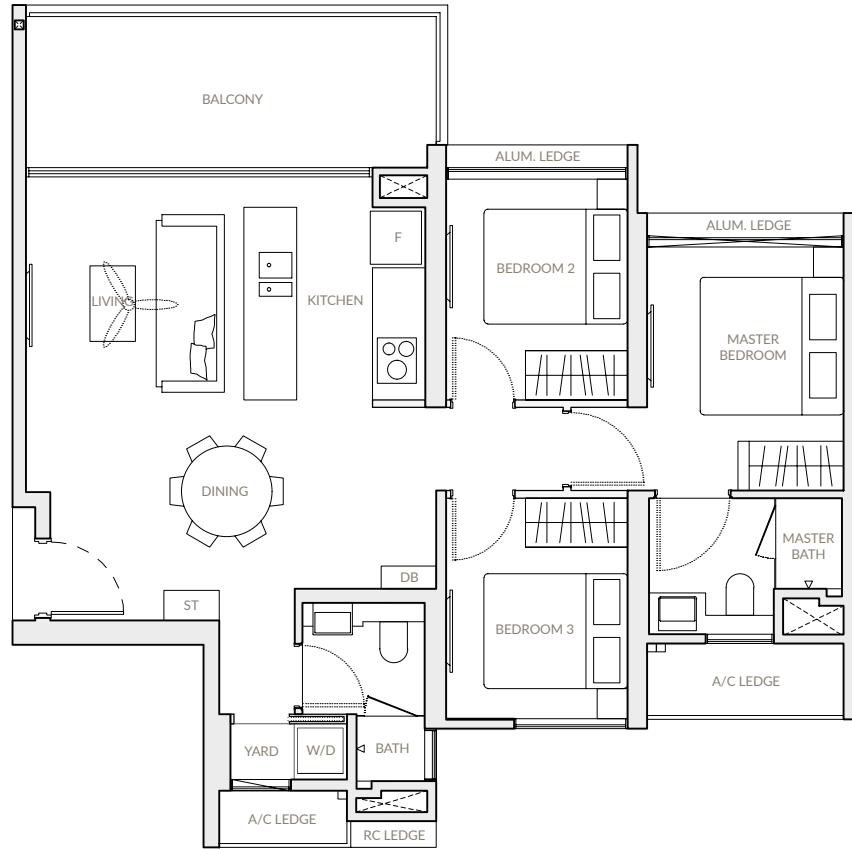
3-BEDROOM (Variant Layout)

TYPE D3-V
89 sqm | 958 sqft

TYPE D3-V

Block 15
#04-06

Block 31
#04-55



Notes: Area includes A/C ledge, balconies, PES and void where applicable. Areas are estimates only and are subject to final survey. Plans are not to scale and subject to changes as may be required by the relevant authorities. The balconies and PES shall not be enclosed unless with approved screen. For an illustration of the approved balcony screen, please refer to the diagram annexed hereto as "Annexure".

3-BEDROOM DELUXE

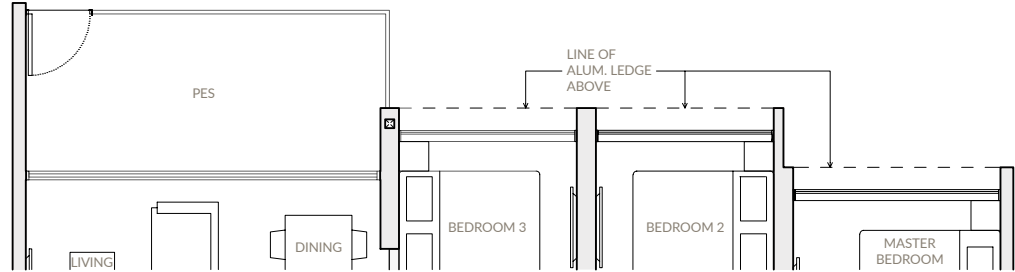
TYPE E1

100 sqm | 1,076 sqft

TYPE E1-P

Block 29

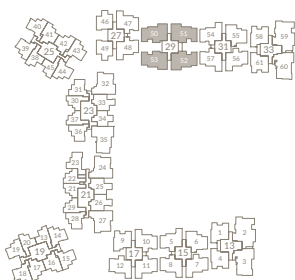
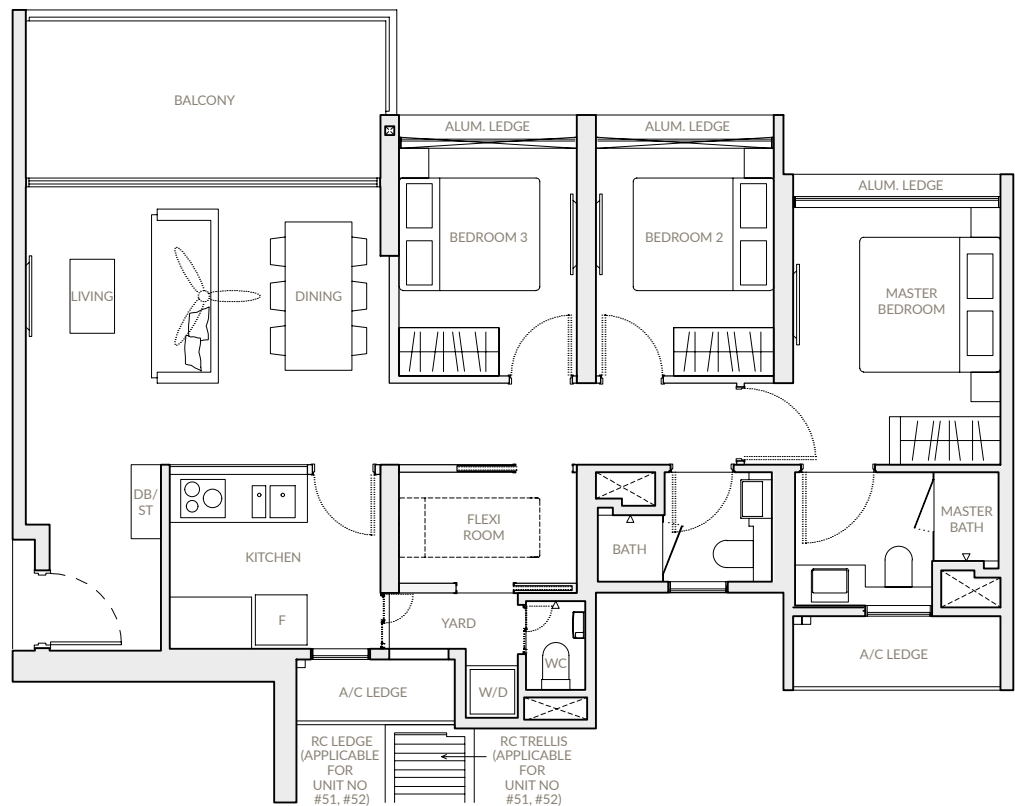
- #03-50 (Mirrored)
- #03-51
- #03-52 (Mirrored)
- #03-53



TYPE E1

Block 29

- #04-50 to #13-50 (Mirrored)
- #04-51 to #13-51
- #04-52 to #13-52 (Mirrored)
- #04-53 to #13-53



Notes: Area includes A/C ledge, balconies, PES and void where applicable. Areas are estimates only and are subject to final survey. Plans are not to scale and subject to changes as may be required by the relevant authorities. The balconies and PES shall not be enclosed unless with approved screen. For an illustration of the approved balcony screen, please refer to the diagram annexed hereto as "Annexure".

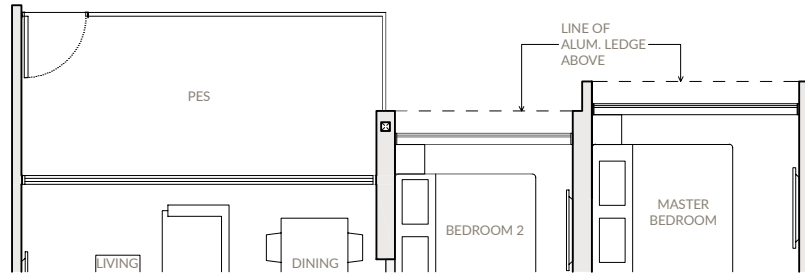
3-BEDROOM DELUXE

TYPE E2
104 sqm | 1,119 sqft

TYPE E2-P

Block 21
#03-24 (Mirrored)
#03-27

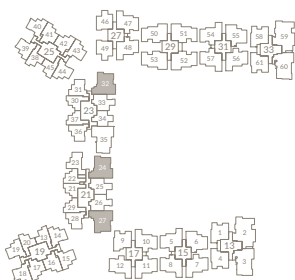
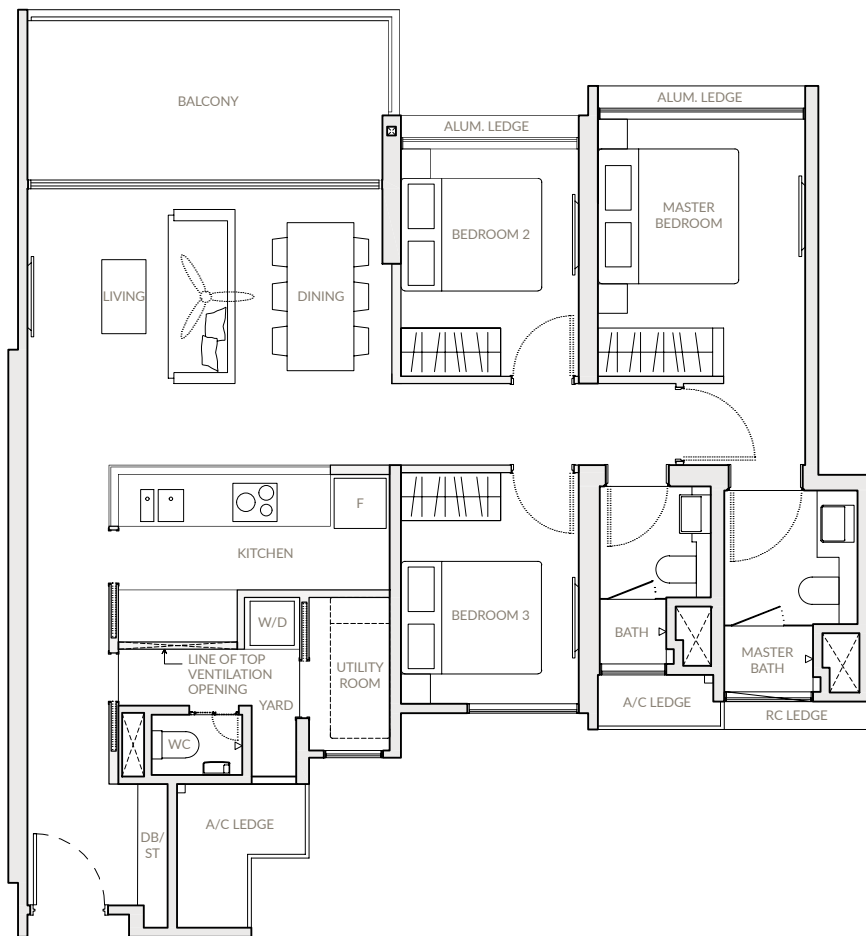
Block 23
#03-32 (Mirrored)



TYPE E2

Block 21
#04-24 to #13-24 (Mirrored)
#04-27 to #13-27

Block 23
#04-32 to #13-32 (Mirrored)



Notes: Area includes A/C ledge, balconies, PES and void where applicable. Areas are estimates only and are subject to final survey. Plans are not to scale and subject to changes as may be required by the relevant authorities. The balconies and PES shall not be enclosed unless with approved screen. For an illustration of the approved balcony screen, please refer to the diagram annexed hereto as "Annexure".

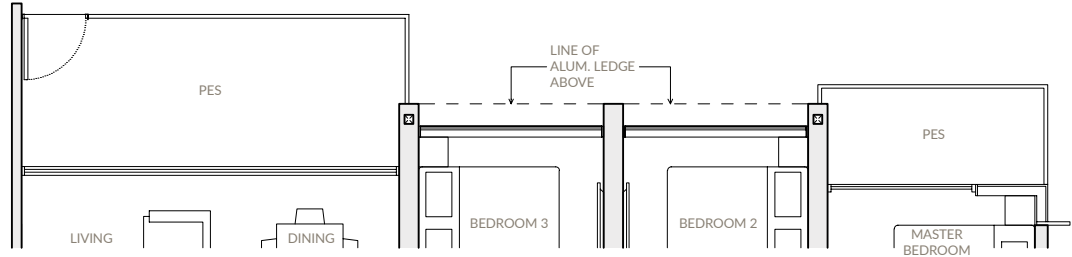
4-BEDROOM

TYPE F1

TYPE F1-P
117 sqm | 1,259 sqft

Block 13
#03-03

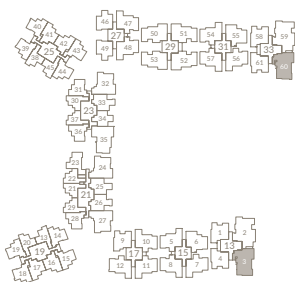
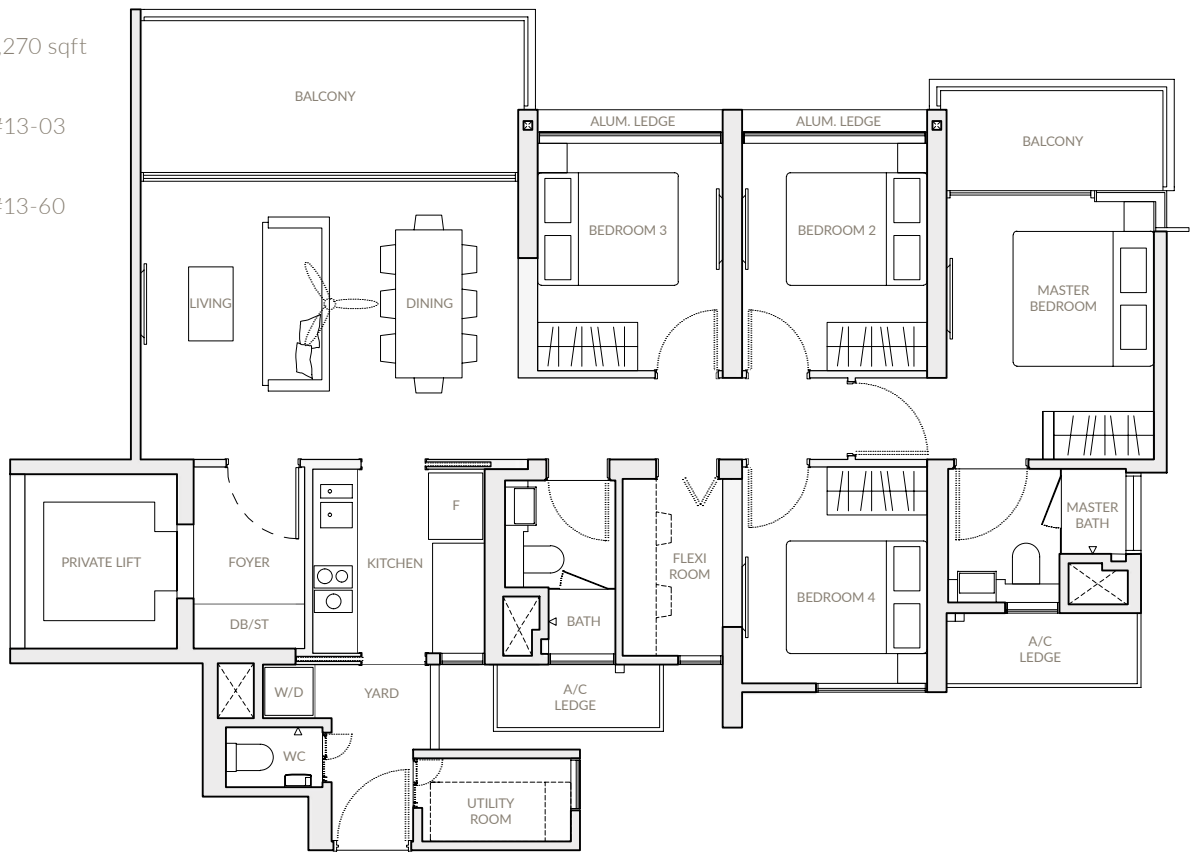
Block 33
#03-60



TYPE F1
118 sqm | 1,270 sqft

Block 13
#05-03 to #13-03

Block 33
#05-60 to #13-60



Notes: Area includes A/C ledge, balconies, PES and void where applicable. Areas are estimates only and are subject to final survey. Plans are not to scale and subject to changes as may be required by the relevant authorities. The balconies and PES shall not be enclosed unless with approved screen. For an illustration of the approved balcony screen, please refer to the diagram annexed hereto as "Annexure".

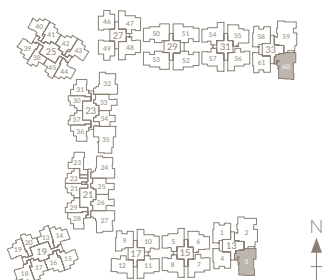
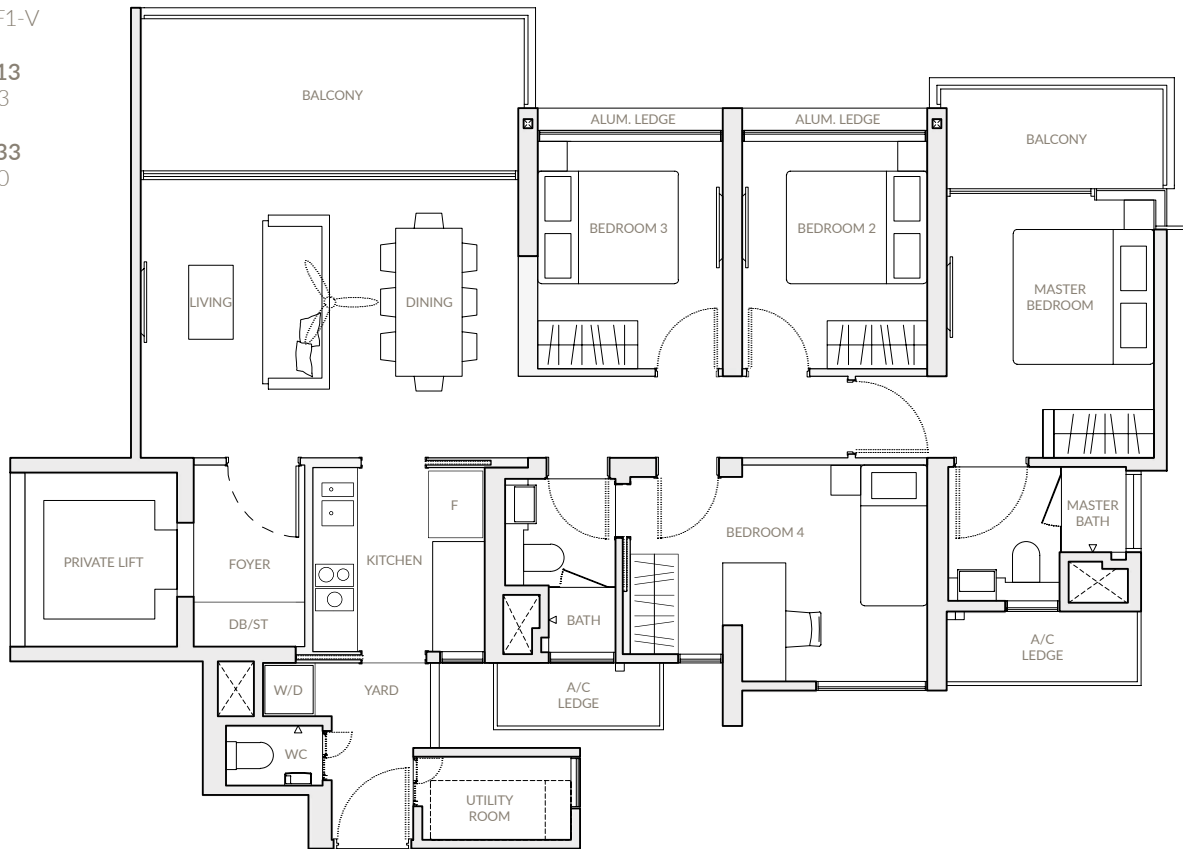
4-BEDROOM (Variant Layout)

TYPE F1-V
118 sqm | 1,270 sqft

TYPE F1-V

Block 13
#04-03

Block 33
#04-60



Notes: Area includes A/C ledge, balconies, PES and void where applicable. Areas are estimates only and are subject to final survey. Plans are not to scale and subject to changes as may be required by the relevant authorities. The balconies and PES shall not be enclosed unless with approved screen. For an illustration of the approved balcony screen, please refer to the diagram annexed hereto as "Annexure".

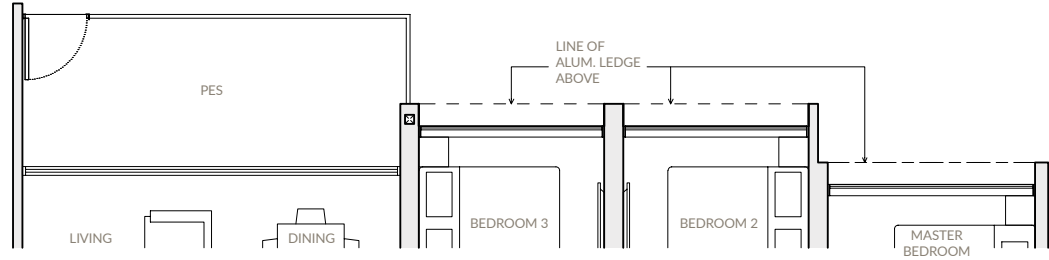
4-BEDROOM

TYPE F2

119 sqm | 1,281 sqft

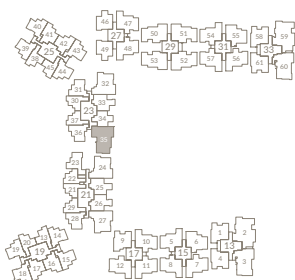
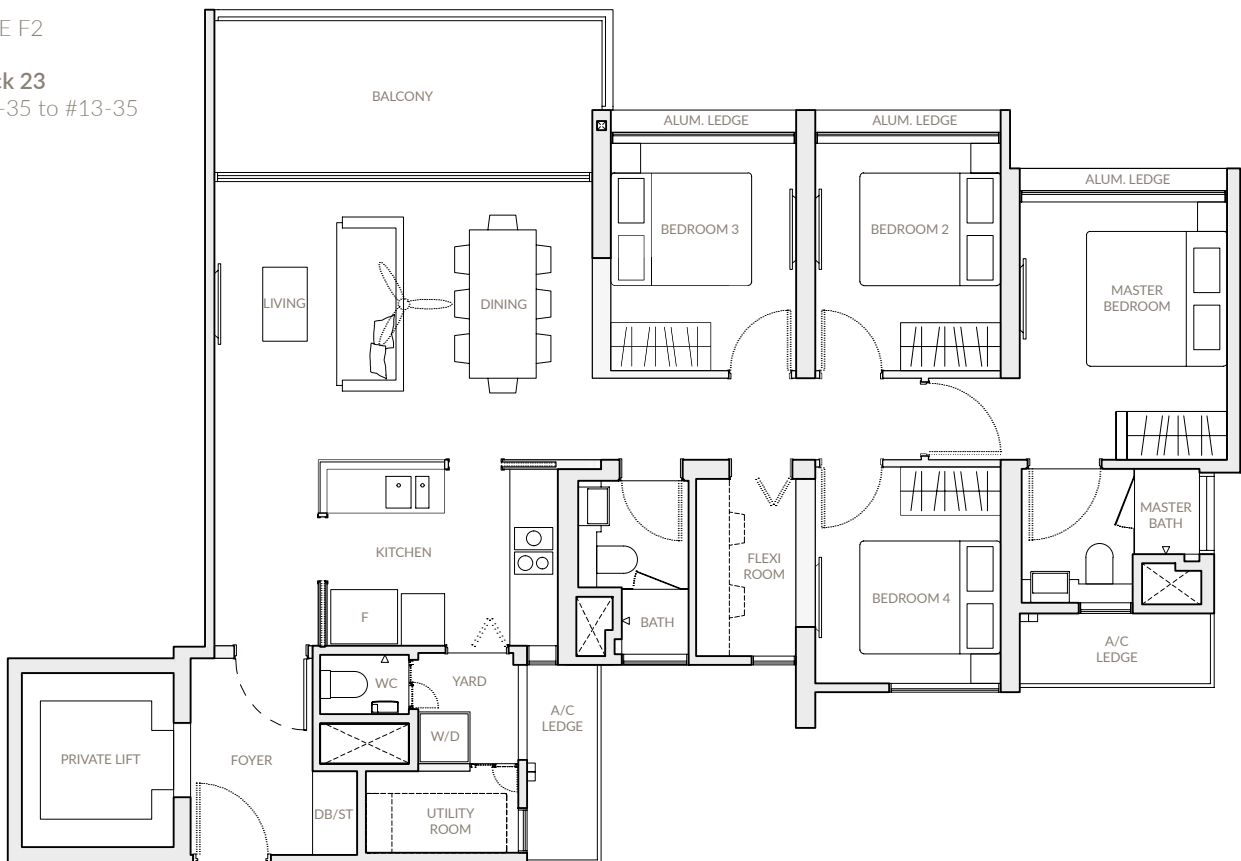
TYPE F2-P

Block 23
#03-35



TYPE F2

Block 23
#05-35 to #13-35



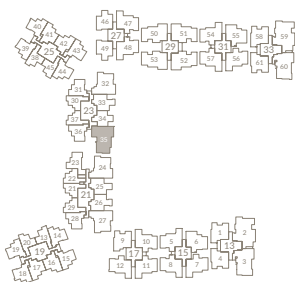
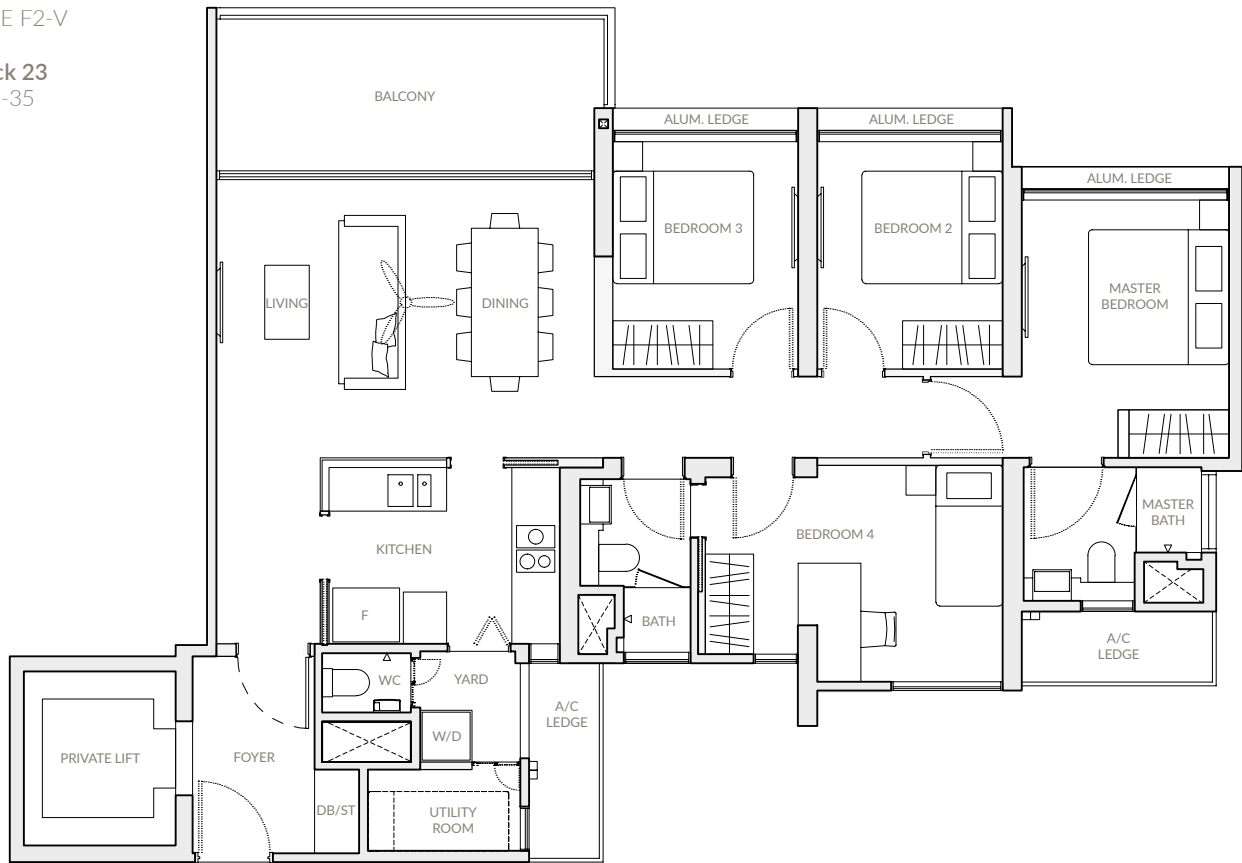
Notes: Area includes A/C ledge, balconies, PES and void where applicable. Areas are estimates only and are subject to final survey. Plans are not to scale and subject to changes as may be required by the relevant authorities. The balconies and PES shall not be enclosed unless with approved screen. For an illustration of the approved balcony screen, please refer to the diagram annexed hereto as "Annexure".

**4-BEDROOM
(Variant Layout)**

TYPE F2-V
119 sqm | 1,281 sqft

TYPE F2-V

Block 23
#04-35



Notes: Area includes A/C ledge, balconies, PES and void where applicable. Areas are estimates only and are subject to final survey. Plans are not to scale and subject to changes as may be required by the relevant authorities. The balconies and PES shall not be enclosed unless with approved screen. For an illustration of the approved balcony screen, please refer to the diagram annexed hereto as "Annexure".

4-BEDROOM DELUXE

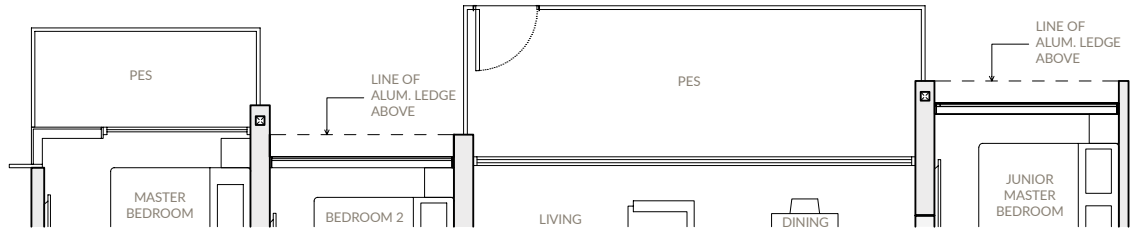
TYPE G

137 sqm | 1,475 sqft

TYPE G-P

Block 13
#03-02

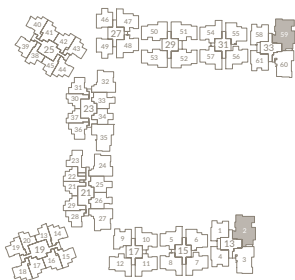
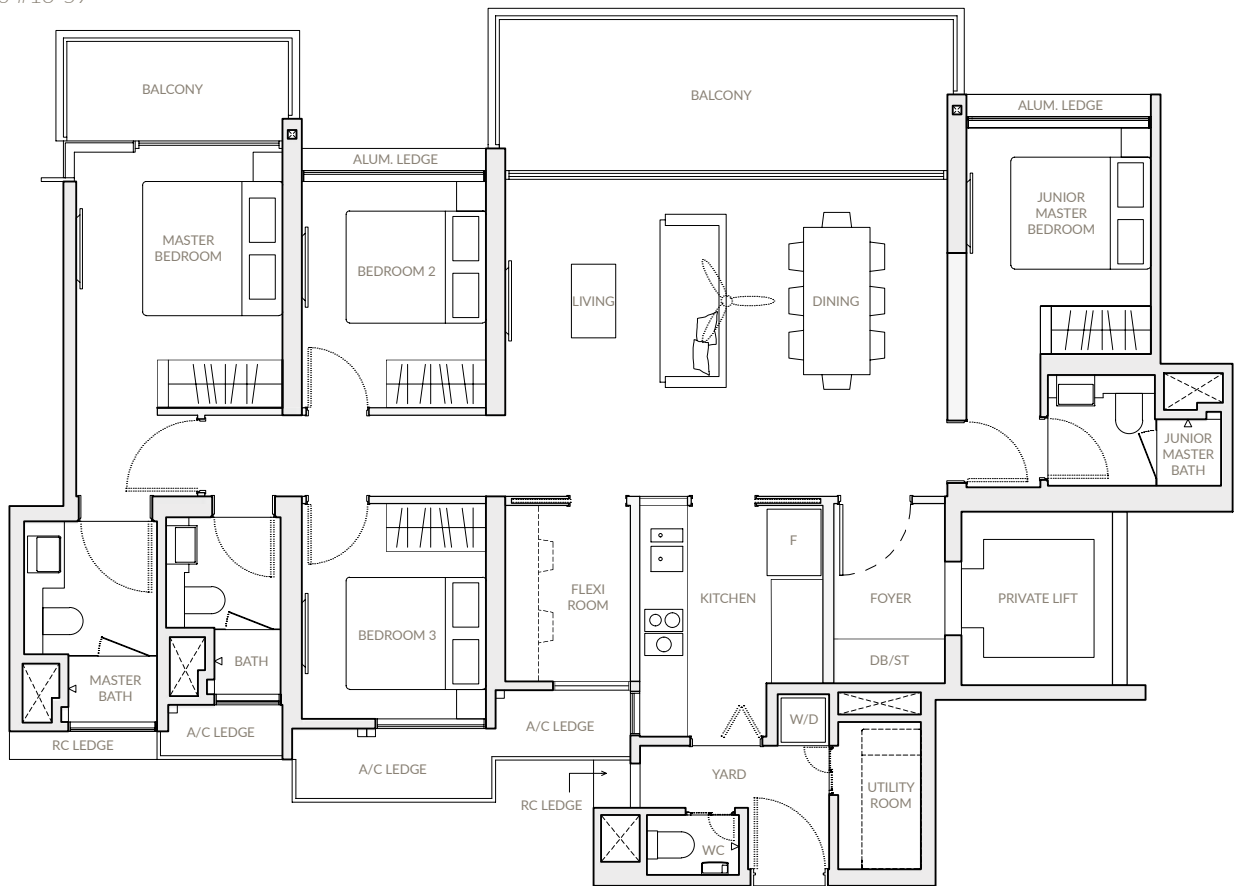
Block 33
#03-59



TYPE G

Block 13
#05-02 to #13-02

Block 33
#05-59 to #13-59



Notes: Area includes A/C ledge, balconies, PES and void where applicable. Areas are estimates only and are subject to final survey. Plans are not to scale and subject to changes as may be required by the relevant authorities. The balconies and PES shall not be enclosed unless with approved screen. For an illustration of the approved balcony screen, please refer to the diagram annexed hereto as "Annexure".

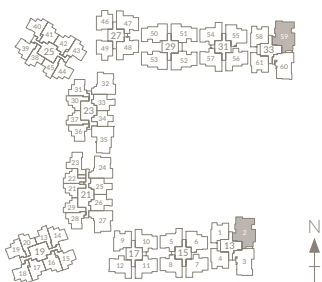
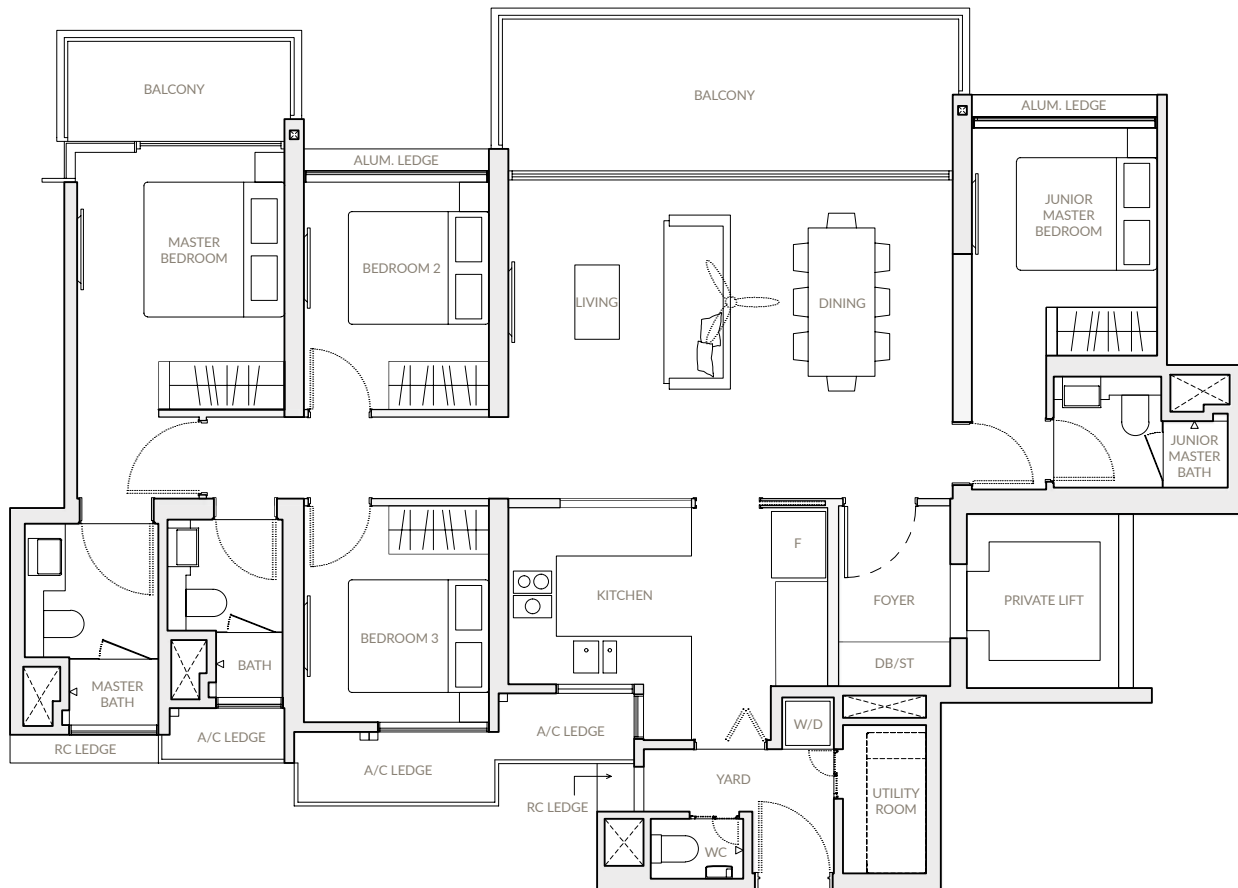
**4-BEDROOM DELUXE
(Variant Layout)**

TYPE G-V
137 sqm | 1,475 sqft

TYPE G-V

Block 13
#04-02

Block 33
#04-59



Notes: Area includes A/C ledge, balconies, PES and void where applicable. Areas are estimates only and are subject to final survey. Plans are not to scale and subject to changes as may be required by the relevant authorities. The balconies and PES shall not be enclosed unless with approved screen. For an illustration of the approved balcony screen, please refer to the diagram annexed hereto as "Annexure".

ANNEXURE

Approved Typical Balcony/PES Screen Design

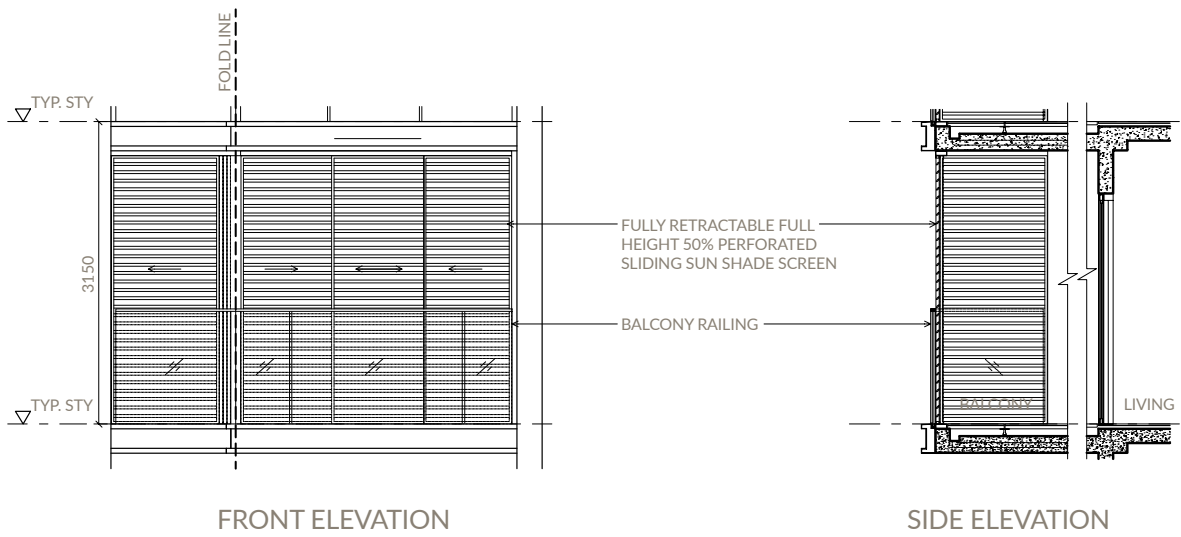


ILLUSTRATION OF TYPICAL BALCONY SCREEN APPROVED BY URA

Notes: Balcony/PES screens are not provided by the Developer. The cost of the screen and installation shall be borne by the Purchaser. Actual profile of the screen is subjected to the manufacturer's details. The proposed balcony screen allows natural ventilation at all times (including the times when the screen is fully enclosed).